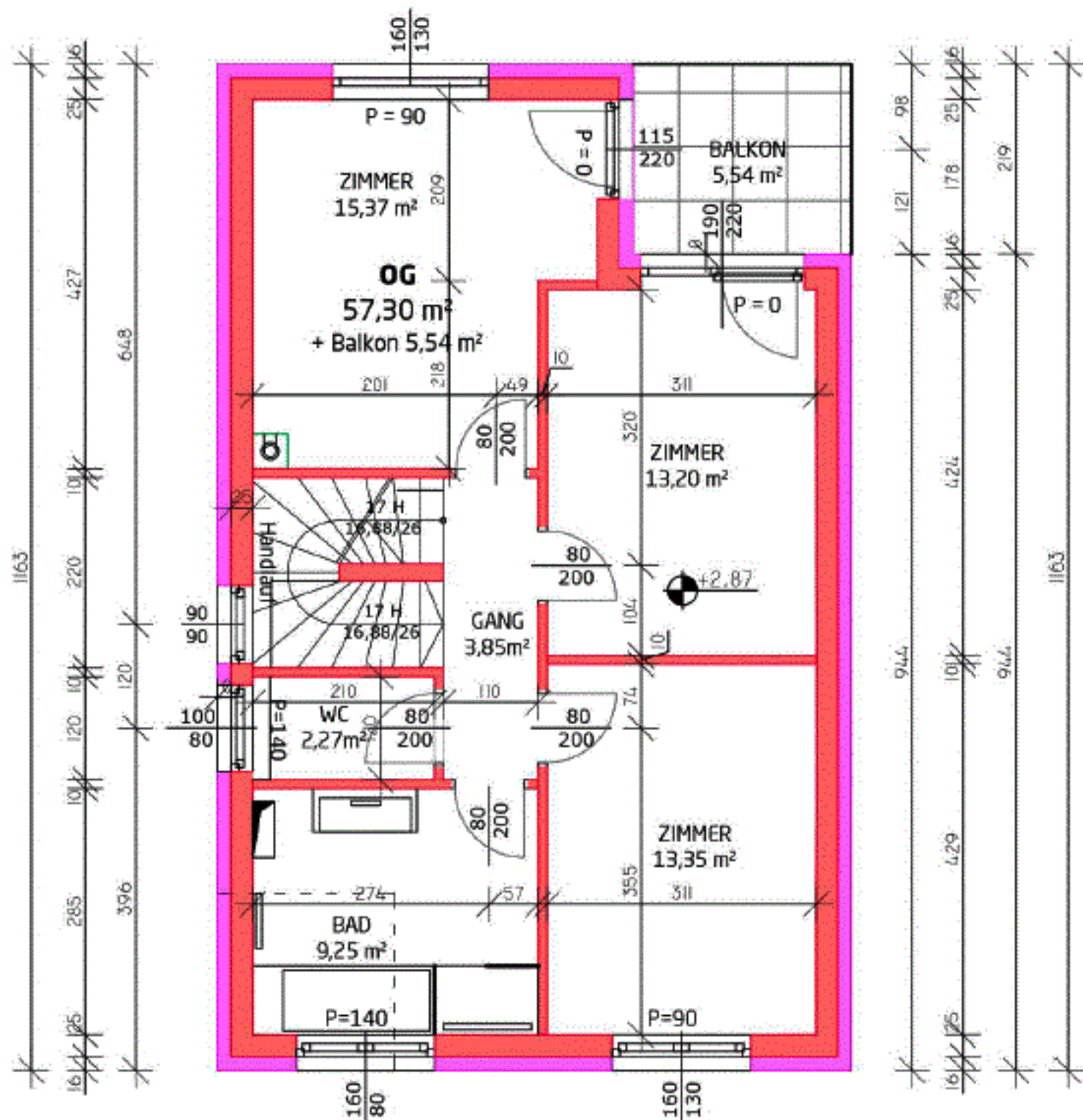
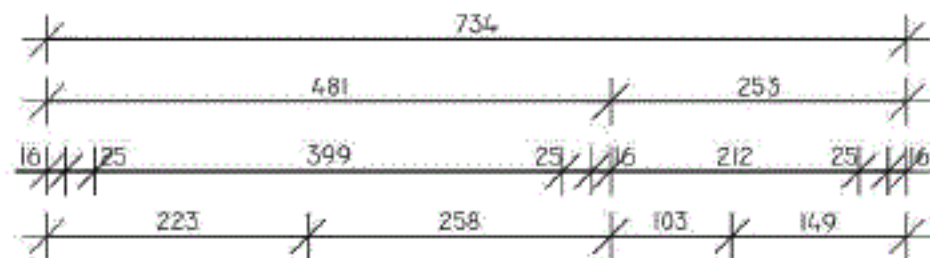


Wohnküche	40,88m <sup>2</sup>
Technikraum	8,07m <sup>2</sup>
Vorraum	5,90m <sup>2</sup>
Wc	2,82m <sup>2</sup>
Terrasse	16,90m <sup>2</sup>



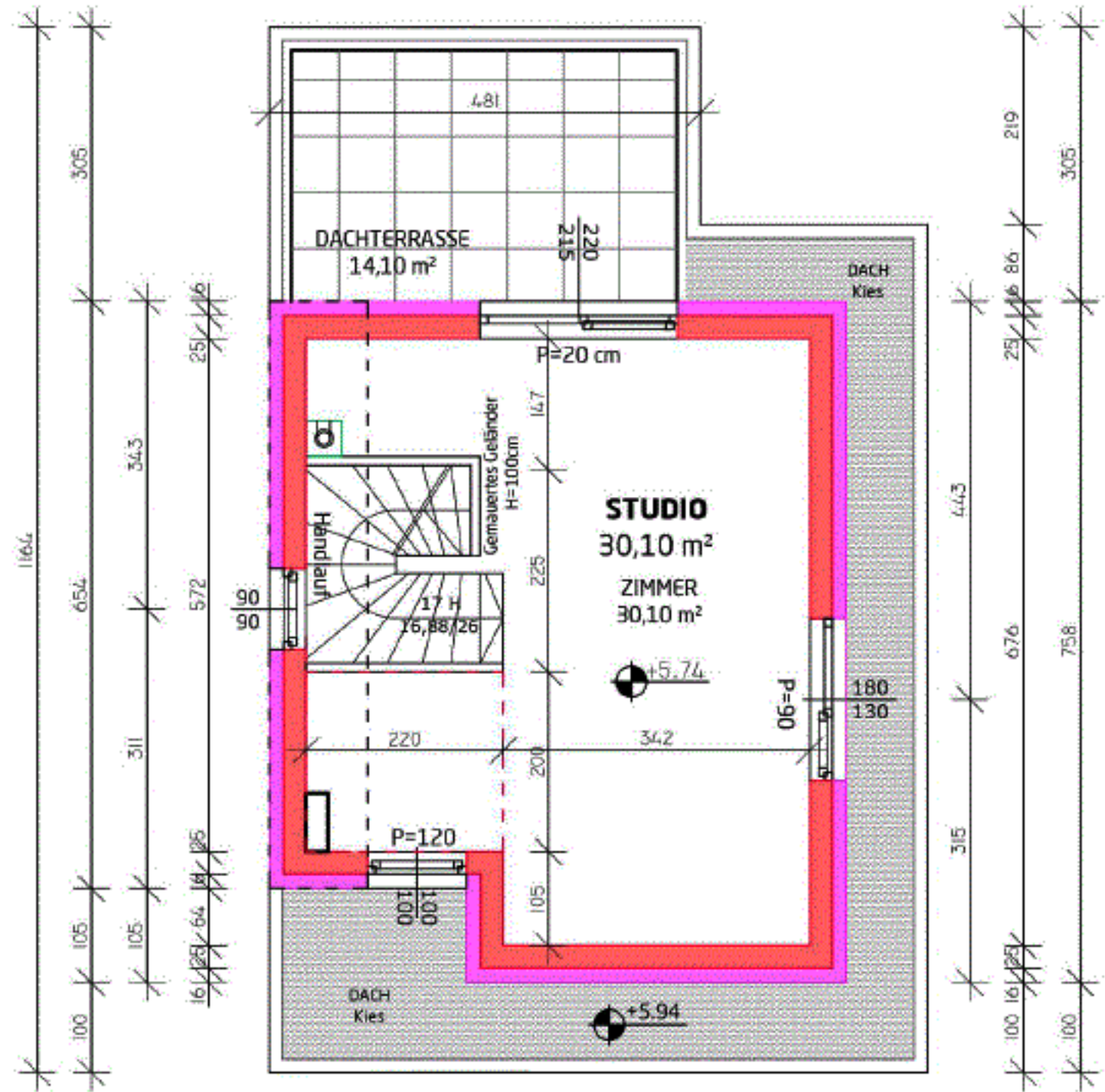
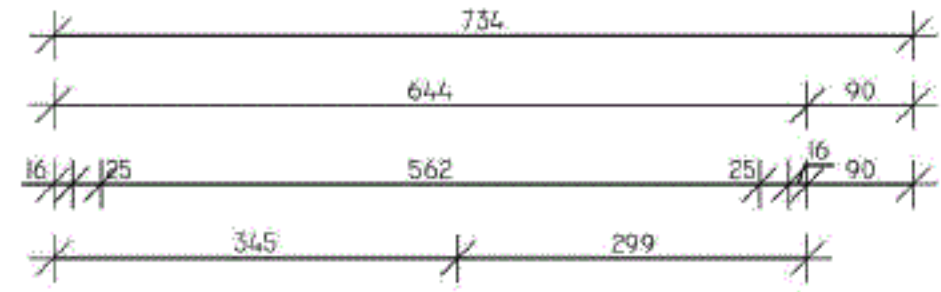




Zimmer 1	15,37m <sup>2</sup>
Zimmer 2	13,20m <sup>2</sup>
Zimmer 3	13,35m <sup>2</sup>
Bad	9,25m <sup>2</sup>
Wc	2,27m <sup>2</sup>
Gang	3,85m <sup>2</sup>
Balkon	5,54m <sup>2</sup>







Dachterrasse 14,10m<sup>2</sup>  
Zimmer 30,10m<sup>2</sup>



Symbofoto - keine Leistungsbeschreibung